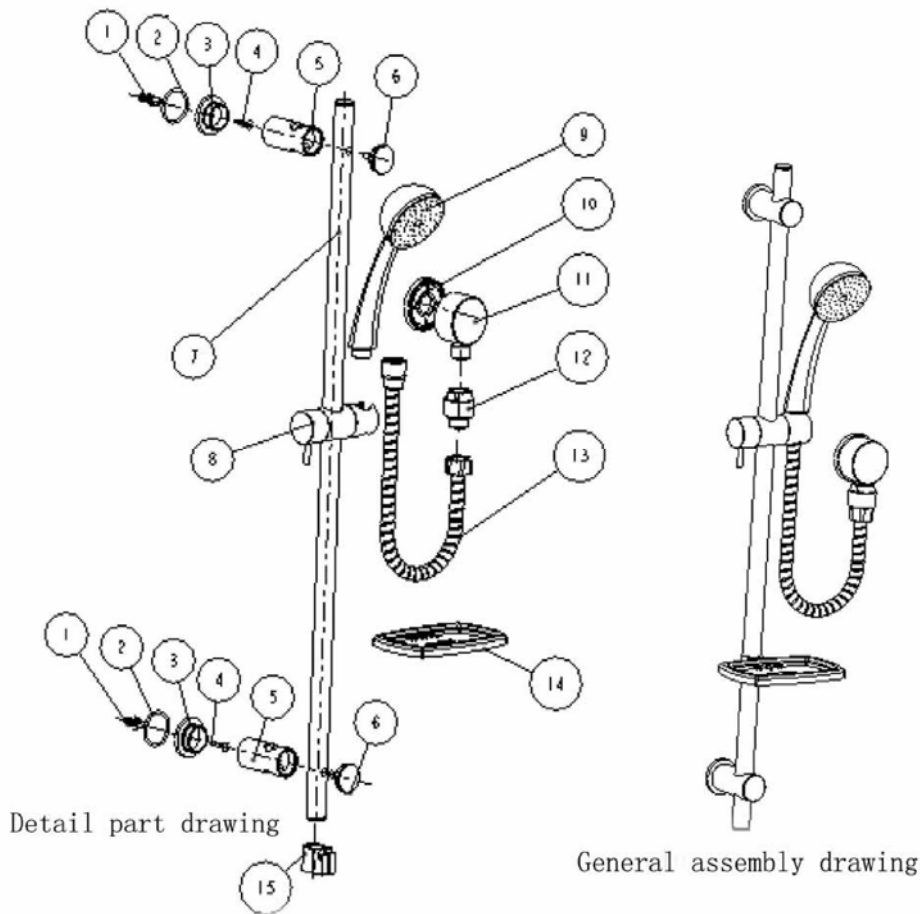
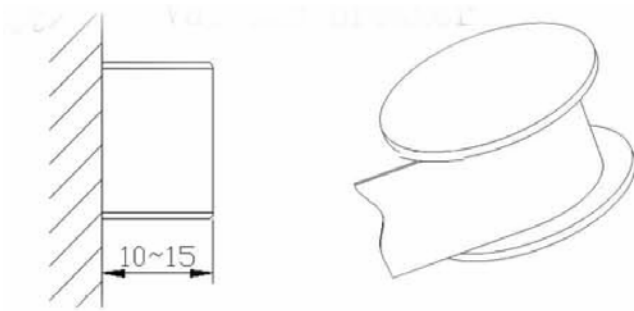


# Installation Instructions



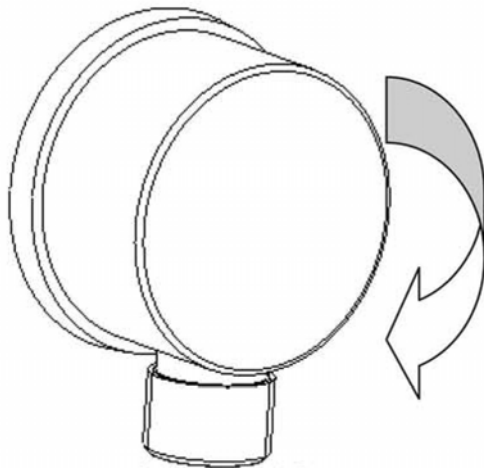
1. Plastic Screw
2. O Ring
3. Base Cover
4. Screw
5. Supporting Base
6. Plug
7. Slide Bar
8. Slide Bar bracket
9. Hand Shower
10. Gasket
11. Elbow
12. Vacuum breaker
13. Hose
14. Soap Dish
15. Soap Dish support

**Component Sourcing International, LLC**  
1575 Boston Post Road, Suite 7, Guilford, CT 06437 USA  
Tel: +1-203-458-2275 ~ Fax: +1-203-453-9757  
email: [sales@componentsourcing.com](mailto:sales@componentsourcing.com)  
web: <http://www.componentsourcing.com>

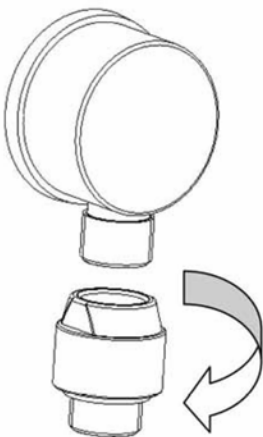


## Installation procedure

- 1) The connection to the water output pipe or pipe fitting should protrude 10mm-15mm from the shower wall. This connection needs to be wrapped in waterproof tape to insure a tight seal.

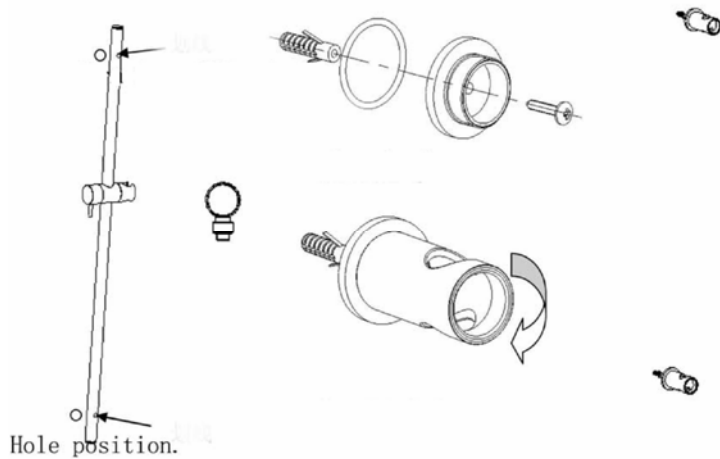


- 2) Connect the water pipe output or pipe fitting to the elbow.

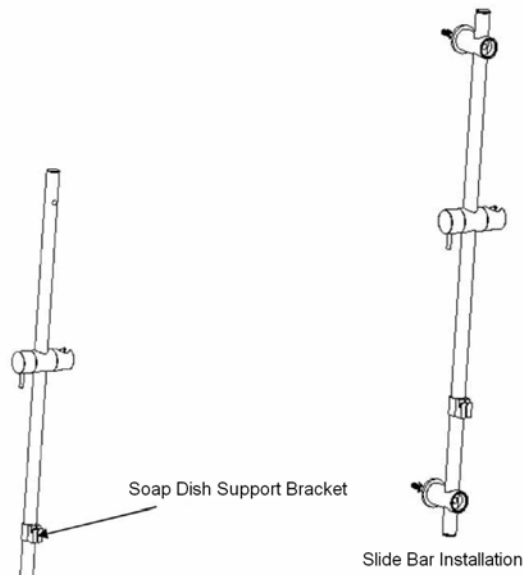


**Component Sourcing International, LLC**  
1575 Boston Post Road, Suite 7, Guilford, CT 06437 USA  
Tel: +1-203-458-2275 ~ Fax: +1-203-453-9757  
email: [sales@componentsourcing.com](mailto:sales@componentsourcing.com)  
web: <http://www.componentsourcing.com>

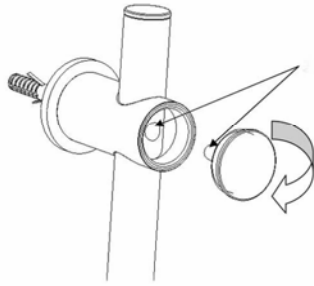
3) Connect the Elbow to the Vacuum Breaker.



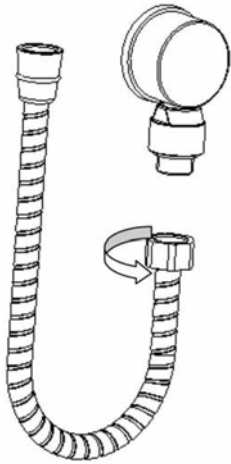
4) Line up the Slide Bar beneath the Elbow, and confirm the desired hole position on the wall mates with the hole position of the Slide Bar. Drill the holes in the desired positions on the shower wall. Place the plastic inserts in the drilled holes and insure the O-ring fits correctly as shown in the figure above, beneath the base cover. Affix the base of the Slide Bar to the shower wall and assemble the Slide Bar base cover as shown.



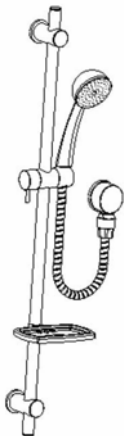
**Component Sourcing International, LLC**  
**1575 Boston Post Road, Suite 7, Guilford, CT 06437 USA**  
**Tel: +1-203-458-2275 ~ Fax: +1-203-453-9757**  
**email: [sales@componentsourcing.com](mailto:sales@componentsourcing.com)**  
**web: <http://www.componentsourcing.com>**



- 5) Slide the support for the Soap Dish onto the Slide Bar, and adjust the height to the preferred position.
- 6) Screw in Plug on Slide Bar as shown above, firmly holding the Slide Bar while inserting the shaft of the plug into the hole.



- 7) Connect the Hose with the Vacuum Breaker as shown in the drawing above.



- 8) Connect the Hand Shower with the Hose and connect the Soap Dish to the soap dish support.
- 9) Enjoy !

**Component Sourcing International, LLC**  
**1575 Boston Post Road, Suite 7, Guilford, CT 06437 USA**  
**Tel: +1-203-458-2275 ~ Fax: +1-203-453-9757**  
**email: [sales@componentsourcing.com](mailto:sales@componentsourcing.com)**  
**web: <http://www.componentsourcing.com>**