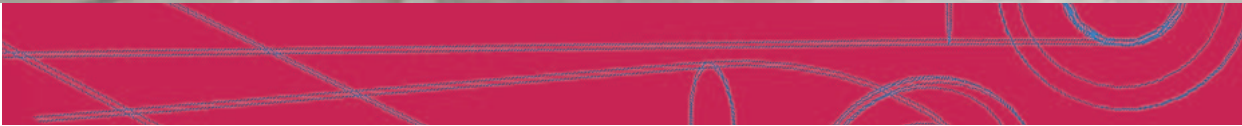




Component Sourcing International
ISO 9000 Quality Components from Asia

Remaining competitive in a global marketplace



Grab Bars

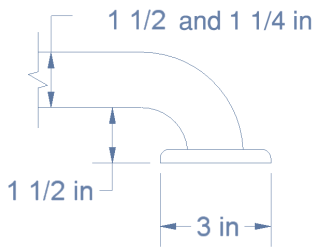
CSI Grab Bars

CSI offers a full range of high quality grab bars available in a wide variety of styles, sizes and configurations.

COMPLIES WITH ALL ADA REQUIREMENTS

MATERIALS

Grab bars are made from 304 (18-8) Stainless Steel tubing or 260 Alloy Brass. Tube walls are 18 gauge (1.2mm). Bars are available in either 1-1/2" (38mm) or 1-1/4" (32mm) diameter.



Grab Bar Installation Height
Standard: 33" to 36"
Toilet: 18" to 27"

FINISHES

Satin Finish (shown below) Standard stainless steel grab bar finish.



Grip Finish (shown below) Peened surface for improved grip (available coverage: full length or straight section).



Powdercoat (shown below) Colorful grab bar finish (white and cream standard).



Custom Finishes Custom finishes are also available, including mirror, knurled, plated, and other powdercoat colors.

FLANGES

The flange (which mounts to wall, floor or ceiling) is a key component of the bar's visual appeal and strength. When installed correctly, all CSI grab bars comply fully with ADA guidelines and can withstand loads in excess of 250 lbs. CSI offers a variety of exposed and concealed screw flanges to fit a wide range of applications.

EXPOSED FLANGES

Exposed Flange 3" diameter with three screw holes. Standard flange thickness is 14 gauge. Heavier gauges are available for applications requiring additional strength.



Exposed Flange

CONCEALED FLANGES

CSI also offers three standard flanges that conceal the fastening screws and provide a clean finished appearance. The standard flange base is 14 gauge, but heavier gauges are available. Decorative covers are also available by request.



Concealed Flange

Concealed Flange with Set Screw Cover

conceals the mounting screws and is firmly locked in place by a set screw. The standard flange base is 14 gauge but heavier gauges are available by request.



Concealed Flange with Set Screw Cover

Concealed Twist Flange Flange cover conceals screws and flange by twisting into the locking position. The standard flange base is 14 gauge but heavier gauges are available by request.



Concealed Twist Flange

Concealed Flange with Welded Stud These flanges consist of a single center screw which has been heliarc welded to the flange plate for convenience and easy installation.

CUSTOM FLANGES

Custom configurations and finishes manufactured to meet your application perfectly.



Concealed Flange with Welded Stud

STANDARD CONFIGURATIONS

CSI has the unique ability to make an extensive range of grab bar configurations. Some common arrangements are shown below. Contact CSI for complete product line information.



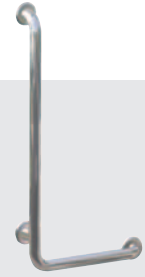
STRAIGHT BAR

BAR-SB12	12"	BAR-SB30	30"
BAR-SB16	16"	BAR-SB32	32"
BAR-SB18	18"	BAR-SB36	36"
BAR-SB24	24"	BAR-SB42	42"
BAR-SB30	30"	BAR-SB48	48"



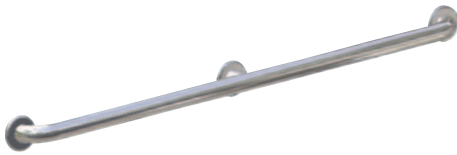
CENTER POST BAR

BAR-CP36	36"	BAR-CP52	52"
BAR-CP42	42"	BAR-CP54	54"
BAR-CP48	48"	BAR-CP60	60"



VERTICAL ANGLE BAR (Right and Left Hand)

BAR-VA12	12"	BAR-VA30	30"
BAR-VA16	16"	BAR-VA32	32"
BAR-VA18	18"	BAR-VA36	36"



STRAIGHT BAR WITH CENTER FLANGE

BAR-SBC48	48"
BAR-SBC52	52"
BAR-SBC54	54"



HORIZONTAL ANGLE BAR

BAR-HA1632	16" x 32"	BAR-HA3030	30" x 30"
BAR-HA2424	24" x 24"	BAR-HA3636	36" x 36"
BAR-HA2040	20" x 40"	BAR-HA3638	36" x 38"
BAR-HA2448	24" x 48"		



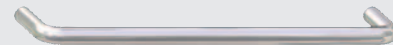
BOOMERANG BAR

120 degree bend
BAR-BB1212- 12" x 12"



FOLD UP / SWING BARS

CSI offers Fold-Up and Swing Bars that smoothly rotate into position, providing convenient and comfortable support when needed.



STAINLESS STEEL HANDLES

CSI also has a complete line of Stainless Steel handles for grills, appliances, commercial equipment and vehicles.



Custom Configurations

CSI offers custom configurations and styles, designed to meet customer's needs. Our in-house engineering staff is here to assist you in designing custom grab bars. Please tell us what you would like — this is what we do best.

INSTALLATION

When installed correctly CSI grab bars will support a static load in excess of 250lbs. Grab bar installation requires a reinforced wall backing. It is the responsibility of the designers, builders and installers to evaluate the application and the wall to specify the appropriate fasteners. Consult local building codes and current ADA requirements to assure compliance.

ADA Grab Bar Compliance (4.26)

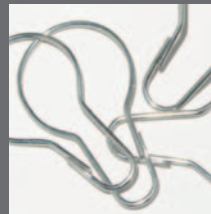
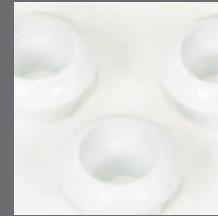
Diameter of grab bars should be 1 -1/4" to 1-1/2" (30-40mm) with 1-1/2" (40mm) clearance from the wall. Grab bars should not rotate in their fittings. The required mounting height is 33" to 36" (840-915mm) from the centerline of the grab bar to the finish floor. Structural strength of grab bars and their mounting devices should exceed 250 lbs of force (1112 N).

A Note on the Care of Stainless Steel

CSI grab bars are extremely durable and will maintain their finish with proper maintenance. CSI grab bars are made of type 304 stainless steel which resists corrosion from water and most chemicals. Stainless Steel should be cleaned frequently with mild soap and water, a cotton cloth and glass cleaner, or a Scotchbrite® pad followed by a water rinse to maintain luster and to prevent tarnishing.

Component Sourcing International LLC (CSI) offers a complete line of high quality fabricated metal components for shower, bath and commercial use. CSI specializes in customized Stainless Steel-based products for a variety of applications including ADA compliant grab bars, shower seats, and handles for grills and appliances. CSI also manufactures accessories for kitchen and bath including shower rods, curtains, soap dishes, towel racks, door fixtures and other hardware.

Component Sourcing International LLC is an American-owned and operated company based in Connecticut with ISO9000 certified manufacturing facilities in China and India. CSI has a strong reputation for supplying quality products while CSI's customers benefit from the cost savings associated with Asian manufacturing.



Component Sourcing International
ISO 9000 Quality Components from Asia

1575 Boston Post Road, Suite 7 Guilford CT 06437 USA
Tel: 203.453.6000 Fax: 203.453.9757
Email: value@componentsourcing.com